

Making Sense Together

Wednesday 30 August 2023

11am - 3pm

Welcome information pack
for visitors

Making Sense Together is a community day to raise awareness of supporting people with learning disabilities and promoting inclusivity for all. Here is some pre-event information that you may find helpful.

If you have any other questions please do get in touch with Alex Nicholson, town centre partnerships and events manager
alex.nicholson@darlington.gov.uk

- Parking
- Walking to the event
- Accessible toilets
- Food & drink
- Quiet spaces
- Programme of activities
- Information stands



Some children find wearing ear defenders useful when visiting events.

This event has no loud music programmed but may have quite a few visitors.

Parking in Darlington

Feethams multi-storey car park is the closest available parking with 650 spaces, including 33 blue badge spaces and 10 electric charging points.

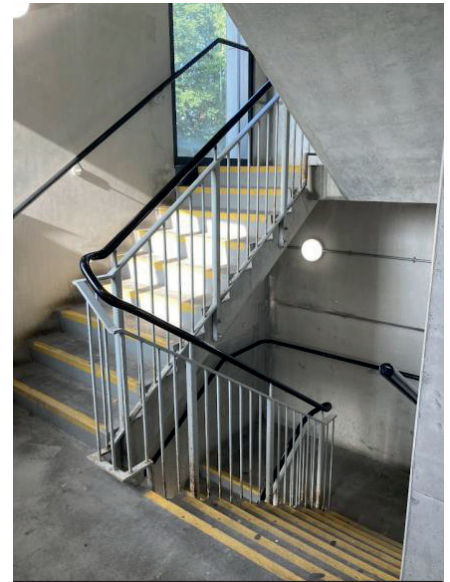
Parking costs £1 per hour.



Entrance
Postcode DL1 5SZ



Lift access



Stair access



Cash or card
payment options

You must park within a marked bay.

When parking here you pay when you leave.

Keep your ticket with you to pay at the machines near the pedestrian exit.

Feethams multi-storey car park electric charging spaces and blue badge spaces:



There are 10 electric charging points



You need to have an electric car to use this bay



There are 33 blue badge spaces

To use an electric charging bay you will need to have your car on charge.

You will need to display your blue badge if you park in a disabled bay.

Car parking charges still apply if you use these bays.

**Walking to the market square
from the lower ground floor
exit of Feetham's multi-storey
car park:**



**Walk up the cobbles to the top and
turn left**

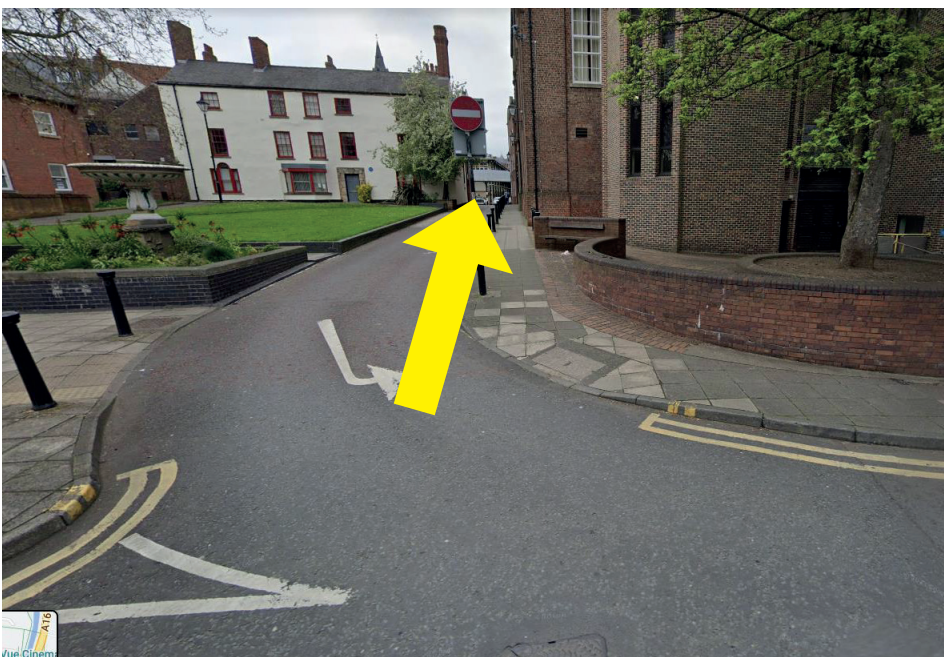


**Cross the road and turn left around the
Dolphin Centre building**

**Walking to the market square
from the lower ground floor
exit of Feetham's multi-storey
car park:**



Turn right onto Bull Wynd



Walk along Bull Wynd

**Walking to the market square
from the lower ground floor
exit of Feetham's multi-storey
car park:**



**Turn right at end of Bull Wynd for the
Market Square**



Arrive at Market Square

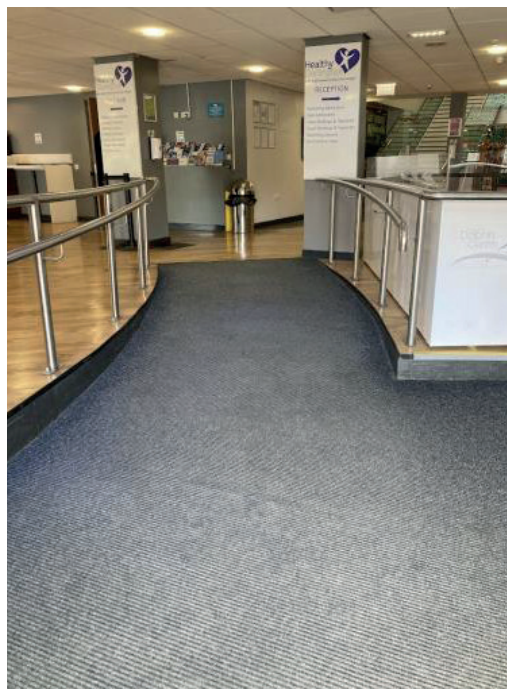
Accessible toilets and parent room in the Dolphin Centre

The Dolphin Centre has cubicle and accessible toilets on each floor of the building.

Access to each floor is via steps or lift.



**The Dolphin Centre
Sliding door entrance**



**Carpet ramp entry to
reception area**

Ground floor - accessible toilet with bed changing facility (gain access via reception team).

First floor - quiet parent room, accessible toilet with changing table and cubicle toilets.

Second floor - accessible toilet (no bed), cubicle toilets.

Sensory Key

You may smell the swimming pool.

The Dolphin centre is usually warm and the lights are bright.

This area may become crowded as people arrive to use the centre.

Ground Floor

Accessible toilet and changing place

Hoist and changing table

Toilet with handles

* Access available from the reception desk.



Bed with hoist



Accessible toilet

There are also small cubicle toilets available on the ground floor.

First Floor

Access to the first floor is via the lift or staircase.



Lift



Inside the lift



Staircase

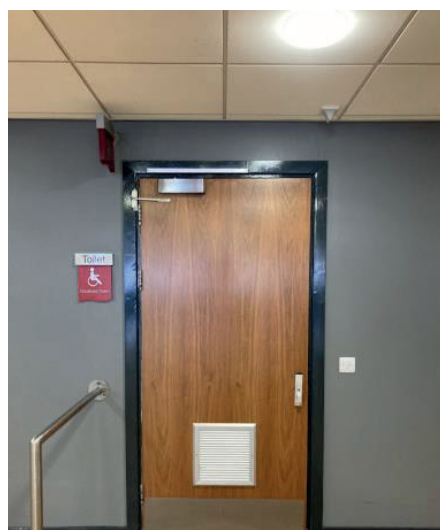
An accessible toilet is located on the first floor.



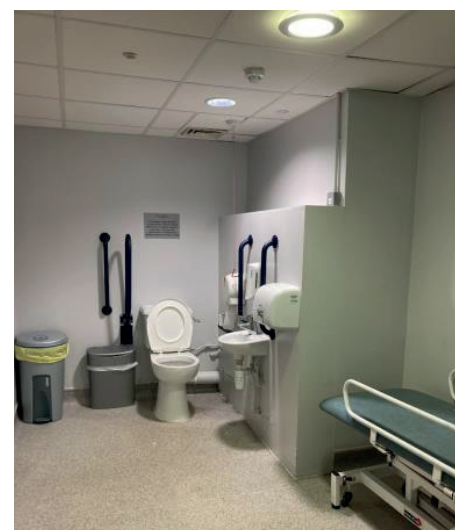
Accessible toilet

Changing table

Toilet with hand rails



Entrance to accessible toilet



Toilet with hand rails

There are also cubicle toilets available on the first floor.

First Floor

Parent room

- Changing table
- 1 toilet in cubicle
- Chair
- Feeding chair



Entrance to
parent room



Toilet cubicle



Changing table



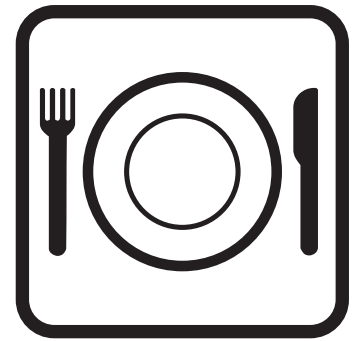
Chair



Feeding chair

Food and drink

There is an outdoor pavement café and indoor bistro available in the Dolphin Centre, picnic boxes are available and can be taken out.



Example of the picnic platter



The bistro at the Dolphin Centre

YOUNG PEOPLE'S MENU

Plus all of our young people's meals include one portion of your child's 5-A-DAY. perfect!

Children's meals with this symbol ♥ contain at least 2 of your child's 5-A-DAY target.

Hotdog in a Finger Roll £5.10
Served with fries or veg sticks, baked beans and ketchup.

Cheese and Tomato Pizza Slice ✓ £5.10
Served with fries or veg sticks and baked beans.

Crispy Chicken Chunks..... £5.10
Chicken breast with fries or veg sticks, garden peas and ketchup.

Gluten Free Option Available

Crispy Breadcrumbed Fishfingers. £5.10
Served with fries or veg sticks, garden peas and ketchup.

Grilled Pork or Meat Free Sausages £5.10
With mash/chips or veg sticks, garden peas and gravy or baked beans.

Picnic Platter ♥£4.75
Choose from ✓ egg mayonnaise, cheese ✓, ham or tuna with carrot sticks and dip, fruit pot and a cookie or fromage frais.

Gluten free bread available.

Baby Cheesy Mash and Beans ✓ £2.50
A bowl of cheese topped mashed potato with baked beans. Why not change to sweet potato for no extra charge.

NEW Baby Mash, Veg and Gravy ... £2.50
A bowl of mashed potato with a side of fresh vegetables and gravy.

Add one of the following and tick off another of your child's 5-A-Day.

Portion of Fresh Vegetables£1.00

Fruit Pot..... £0.85

Smoothie £2.50

Or choose a Glass of organic Milk£1.50
A great source of calcium.

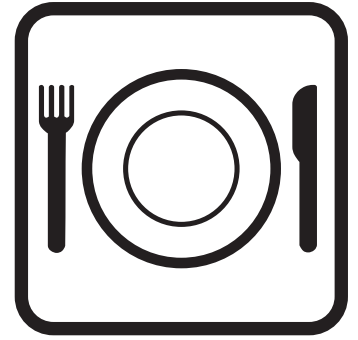
NEW Flavoured Organic Milk..... £2.00
Choose from Strawberry & Banana.

The young people's menu at the bistro

Food and drink

There is outdoor seating in the market square, or borrow a rug and sit and have a picnic in the church grounds or by the riverside.

Bring a picnic or we have plenty food outlets in the town centre to buy some food.



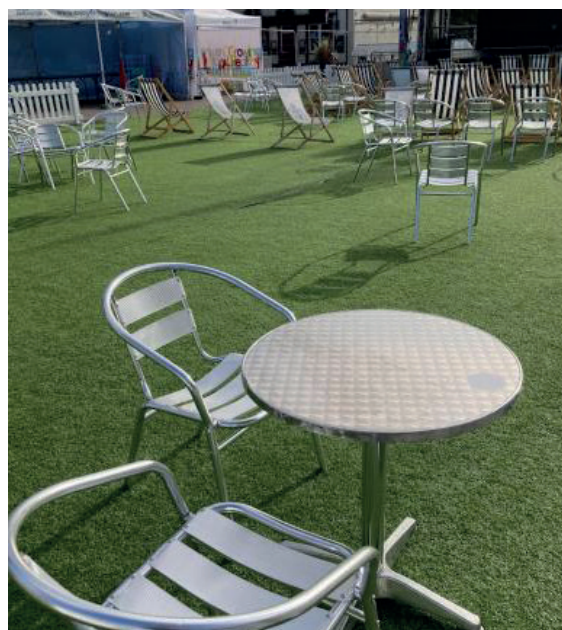
Tables and benches in the market square



Sit outside at 16 Horsemarket



Space to have a picnic next to the river



Seats located on the astroturf

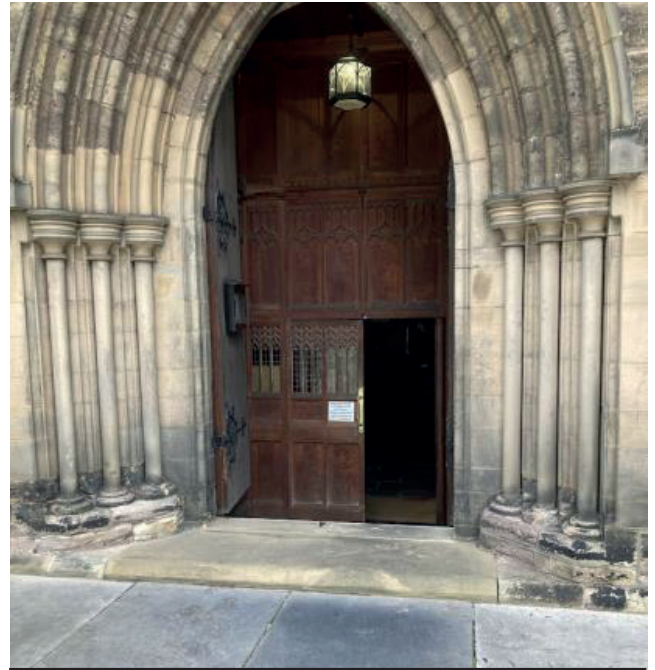
Quiet spaces

St Cuthbert's Church has opened its doors for families to visit offering a cool and quiet space.

There will be no music playing in the church.



The cobbled walkway to the church



Entrance to the church



Steps into the church

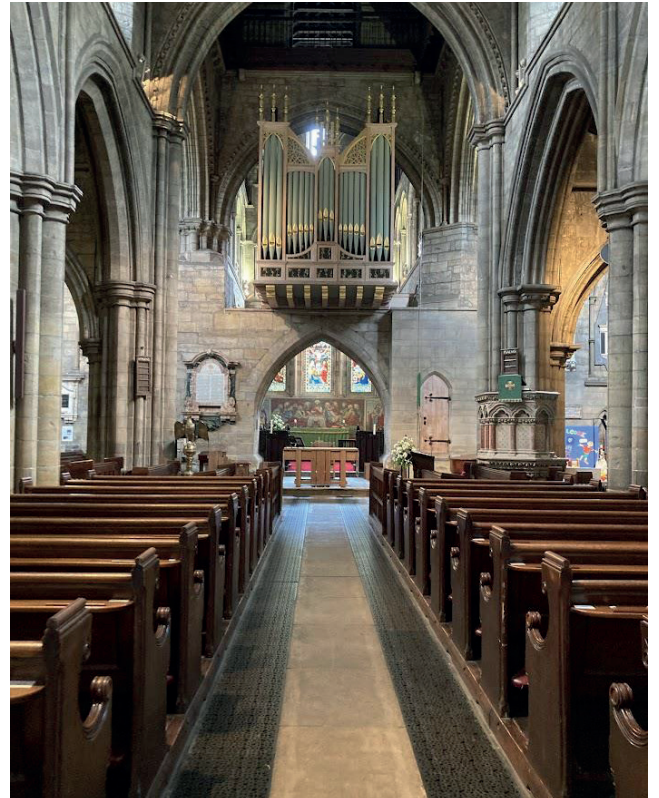
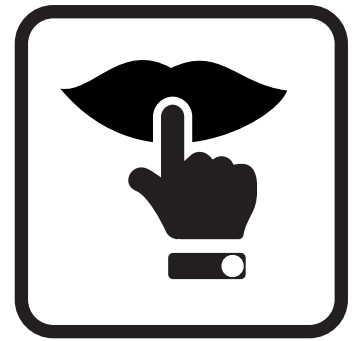


Information about wheelchair access

Quiet spaces

St Cuthbert's Church has opened its doors for families to visit offering a cool and quiet space.

There will be no music playing in the church.



This is what the inside of the church looks like.

Programme of activities



Market Square 11am 3pm



The Rig is an installation of curiosities comprising of eight structures plus smaller bits n bobs a musical playground for all the family. Built from up cycled objects turned into instruments and sound experiments, kids can really get creative with music.

Fully accessible for wheelchair users and children with disabilities, The Rig is able to be enjoyed regardless of ability or physical restraints.

playtherig.co.uk

Programme of activities



Walkabout bubbles, 30 minutes, in Blackwellgate area at the following times:

11am

1pm

3pm

12pm

2pm



Bubbles - calming and play therapy plus big bubble making. Bubbles can be enjoyed by all ages and abilities.

The World's Tallest Bubbleologist joined the Bubble Inc team as a bubble performer back in 2007 and is one of our most experienced and talented Bubbleologists with an amazing repertoire of bubble tricks! From giant bubbles to the tiniest bubbles in the world, bubble sculptures, smoke bubbles, fire bubbles and tons more to delight and captivate every audience of any age! He has performed throughout the UK and around the world.

<https://www.bubbleinc.co.uk/>

Programme of activities



West Row by the Market Hall 11am - 3pm

Timed stroking session will be available (more details to follow)



Like all our animals, the alpacas are very much loved. They all have their own unique characters, and their inquisitive nature and charm makes you feel so relaxed. It's hard not to fall in love with these enchanting creatures!

Programme of activities



West Row by the Market Hall 11am - 3pm

Timed stroking session will be available (more details to follow)



Meet the Valais Blacknose Sheep - sheep are found to help people self-regulate and they prove popular with both adults and children.

www.eweniqueevents.co.uk

Programme of activities



Market square 11am - 3pm



Carol known as Miss Print will be located on the market square offering drop in craft activities to create and make at one of the gazebo spaces.

Programme of activities



Market square 11am - 3pm

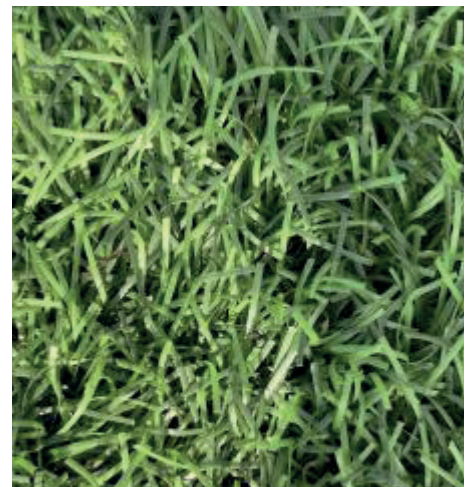


Yvonne Preston from Scrapstore Studios will be located on the market square offering drop in craft activities to create and make at one of the gazebo spaces. Textures and materials to explore.

Programme of activities



Market square 11am - 3pm



The astroturf

There is an astroturf area to play on the market square with some giant games, and hoola hoops to play.

Information stands



Market square 11am - 3pm



Tees Valley Music Service who provide music workshops and lessons across the Tees Valley will be at the event for visitors to learn and explore musical instruments.

Market square 11am - 3pm



Daisy Chain support and empower autistic and neurodivergent individuals through the provision of holistic person centred services, whilst promoting training, wellbeing, inclusion and acceptance regionally and nationwide.

They will be available to talk to for advice and support.

Market square 11am - 3pm



Healthwatch Darlington Limited is an independent consumer champion for health and social care in Darlington. The organisation helps to shape and improve local health and social care in our community. Healthwatch Darlington Limited is part of the Healthwatch national network, established by the Government to ensure local patients and users have a greater input to shaping and designing local services.